

# Forest Musical Society Present



**PROGRAMME £1.00**



Forest Musical  
Society

The Forest Musical Society is a registered charity (Registration No. 1146764)  
Any profits go towards future productions  
May 2016

# ESPIE

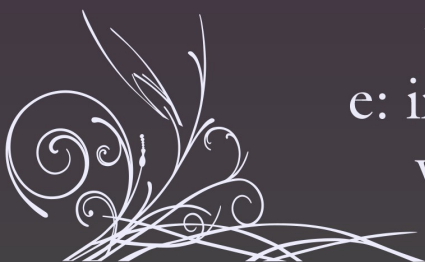
Come along and see us and you will be guaranteed a warm welcome where we offer anything from dry cuts to wedding packages. We are based opposite Lydney Bus Station and are open Tues - Fri 9am till 5pm with late night opening on Thursday nights until 7pm and also 9am till 1pm on Saturdays.

Follow us on Facebook at [www.facebook.com/espiehair](http://www.facebook.com/espiehair)



15 Hams Road  
Lydney  
Gloucestershire  
GL15 5PE

t: 01594 843234  
e: [info@espiehair.co.uk](mailto:info@espiehair.co.uk)  
w: [espiehair.co.uk](http://espiehair.co.uk)



# Forest Musical Society

Present



This amateur production of "Me and My Girl" is presented by special arrangement with  
SAMUEL FRENCH, LTD.

Book and Lyrics by **L. ARTHUR ROSE** and **DOUGLAS FURBER**

Music by **NOEL GAY**

Contributions to revisions by **MIKE OCKRENT**

Book revised by **STEPHEN FRY**

Forest Musical Society is a registered charity (No. 1146764) all profits go to future productions

## Special Thanks

Lydney Town Hall Trust	For their co-operation and help prior to and during the performance
Lydney & District Dramatic Society	For the use of their lights
Mr Steve Sayers	For his support during production and lighting the show
Soundproof Music	For providing the sound engineering expertise
Image Signs	For printing posters and programmes
Glatfelter Lydney Ltd	For their generous donation
To all our advertisers	For their support of the society

**And special thanks go to those selling tickets on our behalf:**

Crazy Occasions in Lydney  
Fairways Furnishing in Coleford  
Palace Cinema in Cinderford





# COLEFORD GARDEN CENTRE

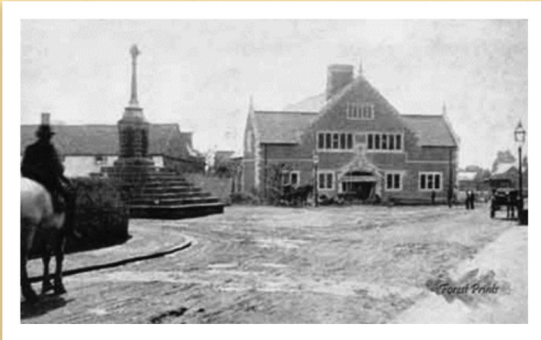
Telephone:  
01594 832700

Lambsquay Road  
Milkwall  
Coleford  
Glos. GL16 8QA



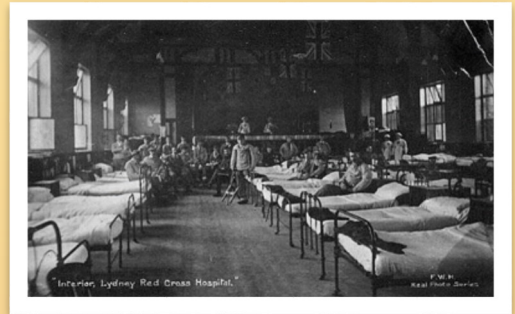


# Lydney Town Hall



In the 1880's, a group of businessmen saw a need for a centre of entertainment for the people of Lydney and District. In 1888, they set to the task of building the Lydney Town Hall that we know of today and formed the Lydney Town Hall Limited completing the building in 1889.

During the First World War the Town Hall was used as the headquarters of a hospital for sick and wounded soldiers. It was manned by Gloucestershire Voluntary Aid Detachment No. 102 and was open from 28th October, 1914 to 28th February, 1919; during which period 3048 cases were treated.



On the 21st September, 1957, to commemorate the 90th birthday of Charles Viscount Bledisloe PC, GCMG, KBE the Town Hall was vested in the Lydney Town Hall Trust for the benefit of the inhabitants of Lydney and District by the Lydney Town Hall Company Limited; and the Lydney Town Council became the custodians and managers. In 2012, the Town Council, as trustees of the Town Hall Trust took the step to hand over management to the Lydney Town Hall Trust Management Committee.

Today Lydney Town Hall is a beautiful, atmospheric Victorian concert and dance hall with sprung wooden dance floor and large parking area. The hall has a comprehensive and flexible range of facilities that can be adapted to suit virtually every occasion including:

- Wedding receptions
- Private parties & events
- Business conferences, meetings & receptions
- Exhibitions
- Town events.
- Kitchen equipped with cooking & preparation areas
- Licensed bar (Chargeable).
- Car parking for up to 20 cars

**For information about availability of hall or meeting room, please contact Judith at [bookings@lydneytownhall.com](mailto:bookings@lydneytownhall.com), or on 07762 758301 during the mornings.**

# Taurus Crafts



**Cafe - Local Food & Drink - Gift Shop  
Craft Studios & Artisan Businesses  
Markets - Events - Exhibitions**  
Find us on the A48 West of Lydney  
**01594 844841 - tauruscrafts.co.uk**  
Lydney, Forest of Dean, GL15 6BU

## A vibrant showcase of all things creative in the Forest of Dean.

Taurus Crafts is a base for 16 small artisan businesses. A chance to meet the makers, see ethical fashions, local ceramics, gifts, arts and crafts. Food lovers can enjoy a great range of local food and drink from the farm shop and be tempted by lunch or coffee and tea with homemade cakes from the cafe. Our everyday offer is complemented by a programme of events, specialist markets, performances, ceramics activities most weekends and creative activities for children throughout school holidays. Every Christmas, we host the

areas largest market over the first two weekends in December which together with our own units makes us the destination of choice for gifts 'not found in the high street'. For individual events and opening times check the website, join the mailing list or follow Taurus Crafts on Facebook and Twitter or give us a call. Visiting Taurus Crafts couldn't be easier; located on the A48 just outside Lydney with an easily accessible large free car park. We hope to see you soon.

*Taurus Crafts is part of the Camphill Village Trust. [www.cvt.org.uk](http://www.cvt.org.uk)*



### *Forest Of Dean Male Voice Choir*

The Forest Of Dean Male Voice Choir is currently recruiting new members and would welcome anybody who is interested in singing with us.

No previous experience required  
Practice is on Monday & Friday evenings in the West Dean Community Centre Bream at 7:30pm

Contact Eric Woods on 01594 836050

## The Lambeth Walk

Any time you're Lambeth way  
Any evening, any day  
You'll find us all  
Doing the Lambeth Walk, Oi!

Every little Lambeth gal  
With her little Lambeth pal  
You'll find them all  
Doing the Lambeth Walk, Oi!

Everything free and easy  
Do as you darn well pleasey  
Why don't you make your way there?  
Go there, stay there.

Once you get down Lambeth way  
Every evening, every day  
You'll find yourself  
Doing the Lambeth Walk, Oi!



# Plot Synopsis

Me and My Girl is set in the late 1930s and tells the story of an unapologetically unrefined cockney costermonger Bill Snibson, who learns that he is the 14th heir to the Earl of Hareford, and his newly-discovered aristocratic relations are horrified. Bringing him to Hareford Hall, they attempt to educate Bill into the ways of the gentry and separate him from his cockney girlfriend Sally. The result? Chaos of the most comical kind.

This version of the show, with its revised book by Stephen Fry, was revived in the West End in 1985, where it received two Laurence Olivier Awards and ran for eight years. The same production was revived on Broadway in 1986 for a three-year run and won three Tony Awards.

## Musical Numbers

### Act One

#### Overture

- ★ *Mayfair/On the road to Hareford/Hareford Hall*

#### Scene 1

**A Weekend At Hareford** (Guests, Jaquie, Gerald)

**Thinking of No-one But Me** (Gerald, Jaquie)

**The Family Solicitor** (Parchester, Family)

**Me and My Girl** (Bill, Sally)

- ★ *The Kitchen*

#### Scene 2

**An English Gentleman** (Charles, Staff)

**An English Gentleman Reprise** (Servants)

- ★ *The Drawing Room*

#### Scene 3

**You Would If You Could** (Jaquie, Bill)

**Hold My Hand** (Bill, Sally)

**The Family Solicitor Reprise** (Parchester)

- ★ *The Hareford Arms*

#### Scene 4

**Once You Lose Your Heart** (Sally)

- ★ *Hareford Hall*

#### Scene 5

**The Lambeth Walk** (Bill, Sally, Cast)

### Act Two

- ★ *The Garden of Hareford Hall*

#### Scene 1

**The Sun Has Got His Hat On** (Gerald, Jaquie, Guests, Servants)

**Take It On The Chin** (Sally)

- ★ *The Library*

#### Scene 2

**Once You Lose Your Heart Reprise** (Sally)

**Song Of Hareford** (Duchess, Ancestors)

**The Family Solicitor Reprise** (Parchester, Bill, Sir John)

**Love Makes The World Go Round** (Bill, Sir John, Ancestors)

- ★ *Capstan Street, Lambeth*

#### Scene 3

**Leaning On A Lampost** (Bill)

- ★ *Hareford Hall*

#### Scene 4

**Love Makes The World Go Round Reprise/Me And My Girl Reprise** (Cast)



### **Elliott Burge** - Bill Snibson

Elliott has performed throughout Warwickshire and Gloucestershire with previous shows including "Return to the Forbidden Planet", "Fiddler on the Roof" (Perchick), "A Slice of Saturday Night" (Gary), "Fame" (Schlomo), "Barnum" (PT Barnum) "Big" (Josh), Carousel (Enoch Snow), Calamity Jane (Danny Gilmartin), as well as various Pantomimes, Gang Shows, Dance and Musical Reviews. Having first played the role of Charles in "Me and My Girl" in 1998, Elliott is delighted to be taking on the role of Bill.



### **Frankie D'Amato** - Sally Smith

Frankie has been singing and acting from an early age and has loved performing ever since. She has been in a range of musicals and pantomimes and amongst her favourite roles are Dorothy in "The Wizard of Oz", Ugly in "Honk - The Story of the Ugly Duckling", Blousey Brown in "Bugsy Malone", and Ebenezer Scrooge in "Scrooge". Frankie is currently studying her A Levels at Ribson Hall and is delighted to be playing the role of Sally. She would also like to thank her parents for putting up with her constant singing morning, noon and night!



### **Sharon Warren** - Maria, Duchess of Dene / Choreographer

Sharon joined FMS in 2011 but has been performing since the age of 6 and has played many principal roles including "The Boyfriend" (Polly Brown), "Carousel" (Carrie), "Oklahoma" (Ado Annie), "The Sound of Music" (Sister Margaretta), "Fiddler on the Roof" (Hodel), "Pirates of Penzance" (Mabel). Sharon has also performed the role of Choreographer in a number of shows for FMS as well as Director for last years "From Broadway to Hollywood" and our September 2016 production of "The Evolution of Music".



### **Francis James** - Sir John Tremayne

"Me and My Girl" will be Francis's fifteenth production with FMS. Francis has also performed with other groups in the area as well as the Forest of Dean Male Voice Choir. Some of his previous performances include: "Calamity Jane" (Henry Miller), "Carousel", "From Broadway to Hollywood", "Musical Magic 1 and 2".



### **James Roy Gough** - Parchester

Born into a musical family, James soon showed talent for being on stage and having trained and performed with Gloucestershire College, joined FMS back in 2011. Since then James has gone on to various roles in shows including "Jekyll and Hyde" (Jekyll/Hyde), "The Wedding Singer" (Robbie Hart), "Oklahoma" (Will Parker), "RENT" (Tom Collins), "Calamity Jane" (Wild Bill Hickock), as well as performing in his own act "J.R." throughout the region.



### **Teigan Black** - Lady Jacqueline Carstone

Performing from an early age, Teigan has taken roles in a number shows including: "Joseph and the Amazing Technicolour Dreamcoat" (Narrator) at Her Royal Majesty's Theatre in London. Other shows have included "Scrooge" (Fezzy, and Ghost of Christmas Present), "Bugsy Malone" (Leroy), "Honk" (Dot), "Musical Magic 1 & 2" and "From Broadway to Hollywood".



### **Thomas Brooke** - The Hon Gerald Bollingbroke

This is Tom's 6th show since re-joining FMS in 2012. During this time he has played Fyedka in "Fiddler on the Roof", Ali Hakim in "Oklahoma", various roles in "The Wedding Singer", Mr Baskcombe in "Carousel", a scout in "Calamity Jane" and sung various solos and group numbers in "From Broadway to Hollywood". Outside FMS Tom plays guitar and sings with his partner in the newly formed duo Topaz. Tom is looking forward to playing the part of posh Gerald and hopes that you enjoy the show. "I say...Tally Ho!"





### **Paul Edmunds** - Sir Jasper Tring

Paul first appeared in "Me and My Girl" as a member of the Forest Theatre Group in 1998. It was also his first time onstage in a musical. Since 1998 he has been in many shows, pantomimes and plays with a number of local groups. He is delighted to be presenting you with his three comical characters, namely The Pearly King, Richard Hareford and Sir Jasper Tring. He hopes you will take it on the chin, turn on a little grin and smile...



### **Ken Meredith** - Lord Fredrick Battersby

Ken enlisted with FMS in 2001 for "Oh What A Lovely War", and has since been involved in productions that have included "My Fair Lady", "The Pirates of Penzance", "Fiddler on the Roof", "Carousel", and last years "Calamity Jane". Ken also performs regularly with the Forest of Dean Male Voice Choir.



### **Christine Mora** - Lady Clara Battersby

Christine has had so much fun with the Forest Musical Society and her favourite roles have included Mrs Pierce the housekeeper in "My Fair Lady", the Jailor's daughter, a police-woman, and rabbit in "Wind in the Willows", Christmas Present in "A Christmas Carol", and one of Reno's Angels in "Anything Goes". As well as taking parts in other shows such as "Oklahoma" and "Calamity Jane" she has been a member of Bare Bones Travelling Theatre playing Maxine in "Stepping Out" and other productions. This has inspired her to be an extra in TV such as "Casualty", "Trollied" and "The Casual Vacancy".



### **Jessie Brown** - Charles

Jesse joined FMS in 2014 but started acting at the age of 4 and has performed in many Pantomimes since then, he has also performed in musicals including: "Singing in the Rain" (Cosmo Brown), "13 The Musical" (Evan Goldman), "Calamity Jane" (Francis Fryer), "Musical Magic 2", and "From Broadway to Hollywood".



### **Sophy Moxey** - Mrs Brown

Sophy joined FMS in 2013 for our Musical Magic show as her son Harry had already joined the society. After also taking part in last years "Calamity Jane" and "From Broadway to Hollywood", Sophy is delighted to be taking on her first principal role.



### **Kate Russell** - Director

Kate's interest in acting and singing started while at school in Monmouth, where she played principal roles in "Princess Ida" and "The Drum Major's Daughter". Returning to Monmouth after many years, Kate joined Monmouth Music Theatre where she performed in various shows including: "Oklahoma" (Ado Annie), "Anything Goes" (Duchess), "Patience" (various roles), "The Mikado", "Annie Get Your Gun", "The Pirates of Penzance", and "My Fair Lady". Kate joined FMS in 2009 and performed in shows including: "Oklahoma" (Aunt Ella), "The Pirates of Penzance", and "Carousel" (Mrs Mullins). Kate has directed "Trail by Jury" and "The Pirates of Penzance" in Monmouth and Co-Directed last years FMS "Calamity Jane" and is pleased to be facing the new challenge of this show.



### **Ian Russell** - Musical Director

Ian studied horn, composition, and piano at the Guildhall School of Music and Drama in London and on leaving joined the Royal Ballet Orchestra where he spent 2 years before becoming a founder member of the Welsh National Opera Orchestra in Cardiff for 34 years. Ian is Music Director for a number of groups in the region and has built up an extensive teaching practice in Monmouthshire, Gloucestershire and Herefordshire, he also develops educational apps to help young players learn brass and woodwind instruments.

# The Cast

Teigan Black • Tom Brooks • Jesse Brown • Donna Burge • Elliott Burge •  
Frankie D'Amato • Paul Edmunds • James Roy Gough • Sandy Grenar • Jan Griffin •  
Francis James • Brian Knight • Ken Meredith • Christine Mora • Sophy Moxey •  
Kate Russell • Margaret Silsby • Andrew Smith • Jackson-Reeve Turley •  
Memphis-Ray Turley • Jacqueline Turley • Sharon Warren • Marion Whitaker

# The Production Team

Stage Director	<b>Kate Russell</b>
Musical Director	<b>Ian Russell</b>
Choreographer	<b>Sharon Warren</b>
Stage Manager	<b>Graham Gillespie</b>
Producer	<b>Elliott Burge</b>
Lighting Engineer	<b>Stephen Sayers</b>
Sound Engineers	<b>Kevin Jarvis, Harry Moxey</b>
Rehearsal Pianist	<b>Anita Chaloner</b>
Front of House	<b>Friends of the Forest Musical Society</b>

# The Orchestra

Violin	<b>Ruth Friend</b>	Trumpet	<b>Rory Gordon</b>
Reeds	<b>Karen Hanson</b>	Trumpet	<b>Rebecca Berrow</b>
Reeds	<b>Robert Watson</b>	Trombone	<b>Steve Fidler</b>
Keyboards	<b>Anita Chaloner</b>	Percussion	<b>Paul Berrow</b>
Keyboards	<b>Eleanor Perks</b>		





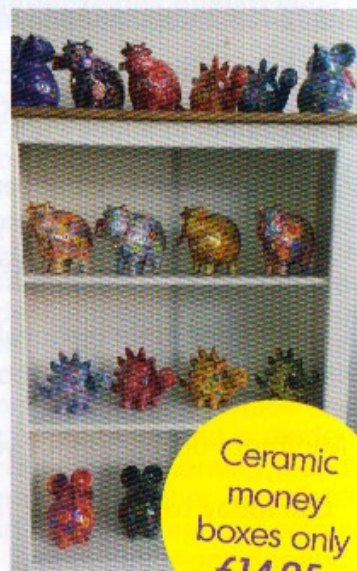
# DK Furnishing

01594 843261

OPEN 9.00am - 4.30pm Tuesday - Friday, 9.00am - 4.00pm Saturday



- **BEDROOM, LIVING ROOM & OCCASIONAL FURNITURE** in pine, oak and sheesham



- **BEDS** including wood, metal, leather and divans
- **MATTRESSES** including orthopaedic, pocket sprung and memory foam in a range of sizes from 2'6" to 6'. *Odd sizes can also be made.*

- We also stock a variety of **GIFT ITEMS**

[www.dkfurnishing.co.uk](http://www.dkfurnishing.co.uk)

26 Newerne Street, Lydney, Gloucestershire, GL15 5RF





**Crazy Occasions**  
*of Lydney*



**The Party Shop**



**FOR ALL YOUR FANCY DRESS  
TO HIRE OR TO BUY  
LOTS OF ACCESSORIES AVAILABLE**

**NEWERNE ST., LYDNEY  
01594 841333**

**ONLINE SHOP NOW OPEN  
[www.crazyoccasions.co.uk](http://www.crazyoccasions.co.uk)**

# Fairways Mobility Centre

Coleford: 01594 836807

Bulwark: 01291 630901





# **PALACE CINEMA**

## **CINDERFORD**

**Telephone: 01594 822555**

**Belle Vue Road**

**Cinderford**

**GL14 2AA**





## Past Productions

Extracts from Oliver 1992  
The Boyfriend 1993  
Chicago 1994  
Fiddler on the Roof 1995  
Little Shop of Horrors 1996  
Me and My Girl 1998  
Calamity Jane 1999  
Blue Remembered Hills 1999  
Anything Goes 2000  
Daisy Pulls it Off 2000  
Oh What a Lovely War 2001  
Cabaret 2001  
Oklahoma! 2003  
My Fair lady 2004  
The Importance of being Earnest 2005  
Wind in the Willows 2006  
A Christmas Carol 2008  
100 years of songs from the Musicals 2009  
Cinderella 2009  
Robin, Son of Crusoe 2010  
Stone of Dreams 2010  
Golden Bird 2011  
Pirates of Penzance 2011  
Fiddler On The Roof 2012  
Oklahoma! 2012  
The Wedding Singer 2013  
Musical Magic 2013  
Carousel 2014  
Musical Magic 2 2014  
Calamity Jane 2015  
From Broadway to Hollywood 2015

Rock 'N' Roll  
Reggae  
Country



Ballads  
Rock  
Pop

# Them2

**Versatile Vocal Entertainers**

(01594) 824857 or 07776275949

facebook.com/Them2info

www.them2official.com

Hits from the 50s to the present...



# Soundproof Music

**Kevin Jarvis**

Mobile Recording Studio

Sound Engineers

**Tel:** 0752 6571318

**email:** soundproofjarvis@hotmail.co.uk

www.soundproofmusic.co.uk

# How To Join Us

There's always a warm welcome for anyone wanting to join us at the Forest Musical Society. We are always happy to receive new members, whether you would like to tread the boards, be part of our production team, or just be a supporter. There is always something exciting to do. If being on stage does not interest you, we welcome members who are keen to construct and paint sets, make costumes, help with publicity, front of house duties and/or fund raising.

If you are retired and have professional skills that are not being used, or you are new to the area, on your own and need to widen your circle of friends, or a student wishing to add to your drama studies and confidence, then why not join us. Our members come from all walks of life and represent all age groups.

We rehearse on Tuesday evenings at Coleford Baptist Church, Newland Street, Coleford from 7:15pm, why not pop along and join in!

For more information see our website at [www.forestmusicalsociety.co.uk](http://www.forestmusicalsociety.co.uk) or our Facebook page at [www.facebook.com/forestmusicalsociety](http://www.facebook.com/forestmusicalsociety)

## Forest Musical Society

Present



## Lydney Town Hall

8th -10th September 2016



**A PERSONAL FRIENDLY & AFFORDABLE  
SERVICE GUARANTEED AT**

# **GRIFFITHS MARSHALL**

*Chartered Accountants*

**FOR QUALITY BUSINESS ADVICE IN  
GLOUCESTERSHIRE AND THE FOREST OF DEAN**

- Owner Managed Businesses**
- Tax Planning Advice**
- Budgets & Forecasts**
- Bookkeeping & Payroll**
- Positive Business Advice  
Including Start-ups, Cash flow**
- Education & Academies**
- Auditing**
- Annual Accounts**
- Solicitors Rules Audit**
- Management Accounting**
- Charities & Not for Profit**
- Farming**

**Free Initial Consultation**



**Lydney: (01594) 843635    Glos: (01452) 520000**

**[www.griffithsmarshall.co.uk](http://www.griffithsmarshall.co.uk)**

email: [info@griffithsmarshall.co.uk](mailto:info@griffithsmarshall.co.uk)

20 Newerne Street, Lydney, Gloucester GL15 5RA

Beaumont House, 172 Southgate Street, Gloucester GL1 2EZ